

Esperance Ports Sea & Land has for sale by public tender a Hyundai HL780-7A front end loader. The loader was purchased in May 2007 and has recorded less than 2000 hours.

The loader is near new and in good working condition. It is available for viewing at the Port and will be available to the successful tenderer as is, where is. See attached technical specifications and photograph.

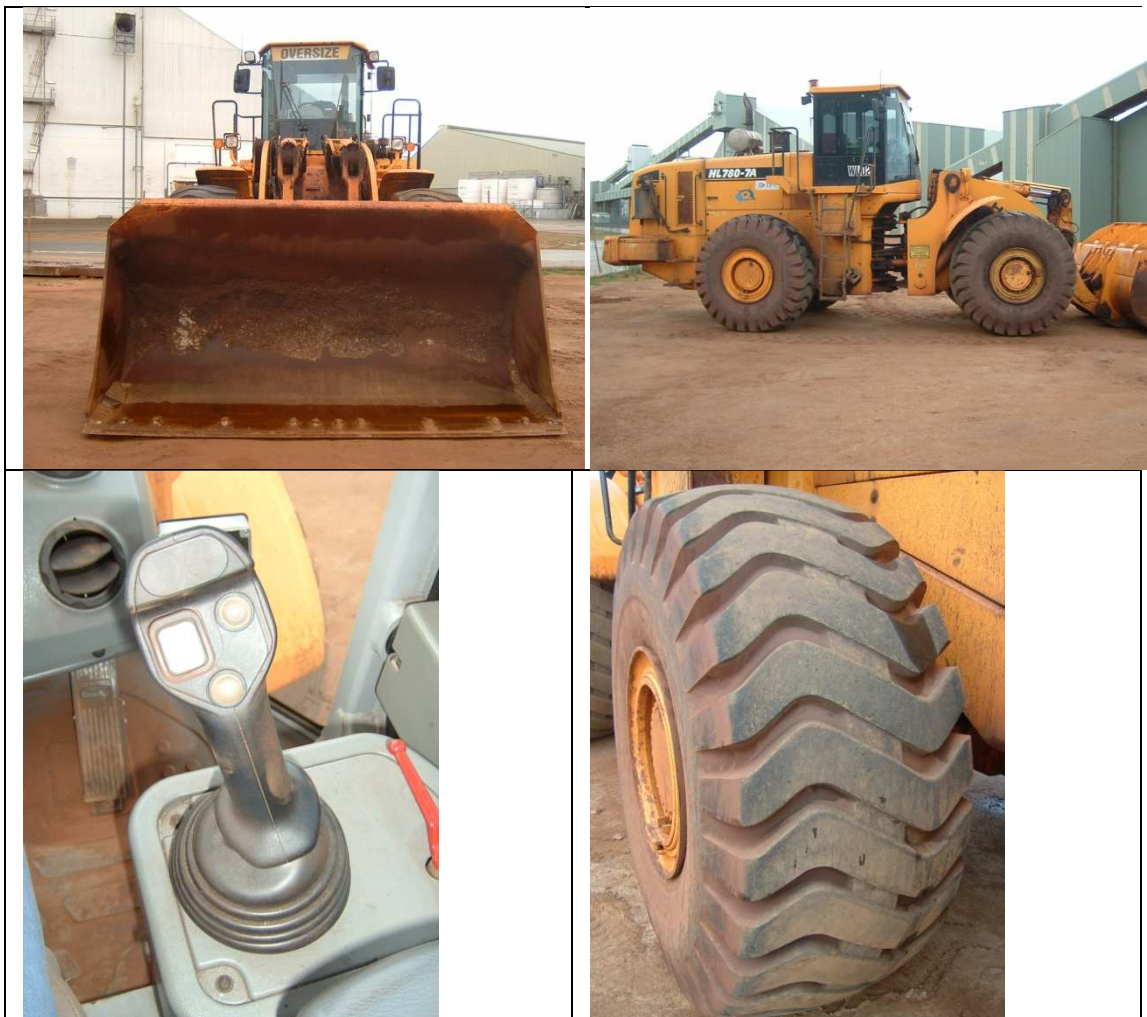
For further information on the frontend loader please contact Dave Jamieson during office hours on (08) 90723375.

Tenders can be addressed to the C.E.O. Esperance Ports Sea & Land, P.O. 35, Esperance WA 6450, and marked "Frontend Loader Tender" or Faxed to 08 90711312 or emailed to [admin@epsl.com.au](mailto:admin@epsl.com.au).

Tenders close on Monday, September 13, at 4pm.

In the event of more than one bid of the same value being received, the tenderers will be invited to re-bid.

The highest or any tender may not be accepted.





## Specifications

**Model:** 2006/07  
**Engine Hrs:** 2000  
**Power:** Cummins  
**Drives:** ZF  
**Fuel capacity:** 470 litres  
**Ave Fuel Con:** 18 lts/hr

### Inventory - Standard & Extras

Spark Arresting Muffler  
Cabin pressuriser  
Lockable Battery Isolator  
9kg and 1.5kg Fire Extinguisher  
Carbon filters for Air-conditioner  
Can Bus Wiring  
Automatic Fire Suppression System  
Rotating beacon and guard  
Canvas Seat Cover  
3 inch Seatbelt  
Corrosion protection including Senson,  
Denso wrapping to all fittings  
Manuals  
Automatic Lubrication system with 20KG Bulk fill cartridge  
Turbo timer  
L3 Lug tyres as seen on machine as standard  
Spare L3 Lug tyre and rim  
Upgrade Air-conditioner condenser  
Front and Rear (4) HID Lights  
Rubber cushioning articulation stops  
Change isolator to switch rather than key  
Polyurethane coating  
DP Filter system (Particulate emissions control for underground / shed)