



# ESPERANCE PORTS

## *Sea & Land*

### **THIS NOTICE IS FOR THE INFORMATION MARINERS AND RECREATIONAL BOATERS**

**ESPERANCE PORTS SEA & LAND  
LOCAL NOTICE TO MARINERS 01/2012**

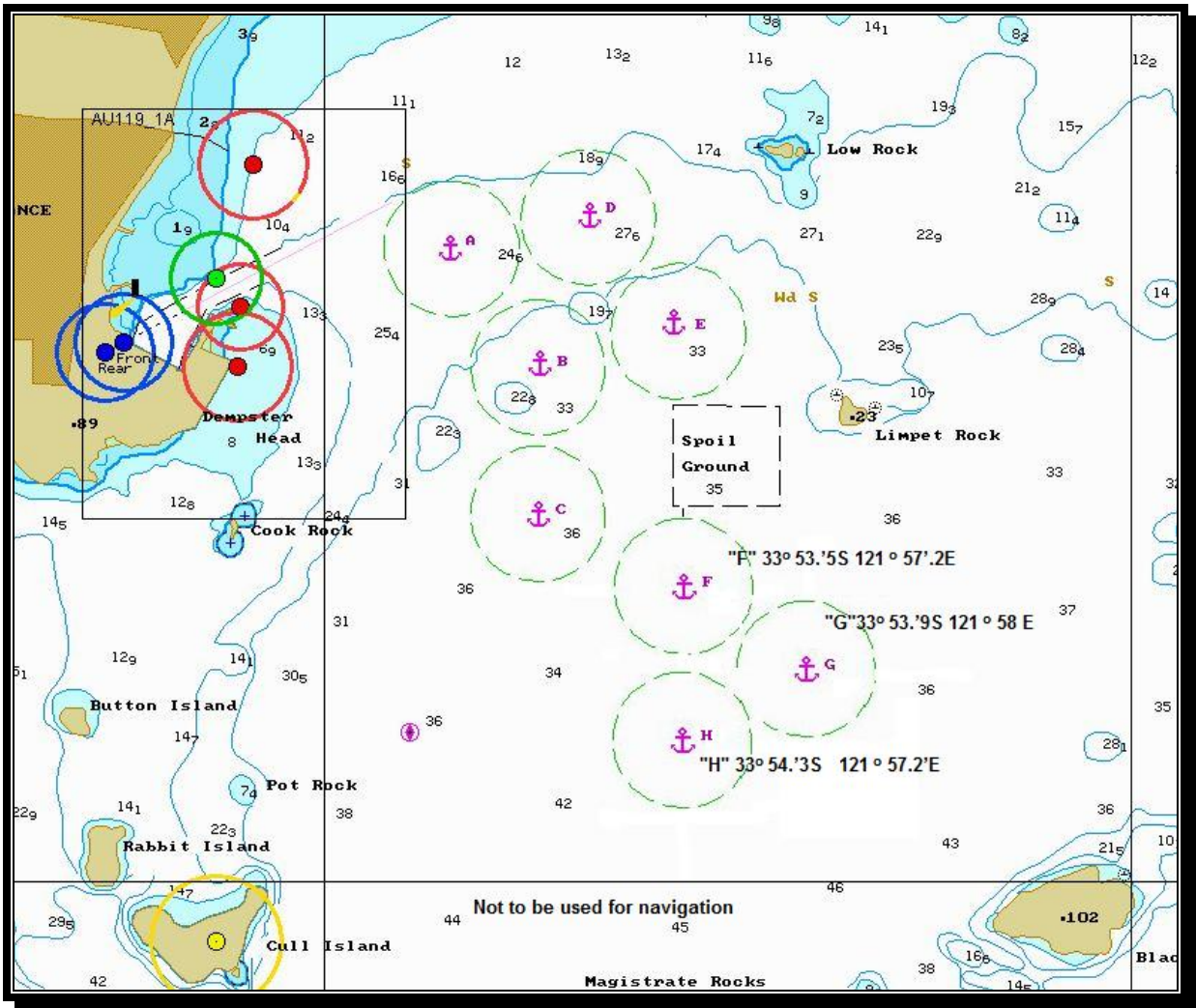
### **PROMULGATION OF ADDITIONAL ANCHORAGES**

The following anchorages have been established.

Name	Latitude	Longitude	Radius
"F"	33° 53.'5S	121 ° 57'.2E	0.35nm
"G"	33° 53.'9S	121 ° 58 E	0.35nm
"H"	33° 54.'3S	121 ° 57.2'E	0.35 nm

**Charts Affected  
AUS 119**

Harbour Master  
Esperance Ports Sea & Land



### PLAN OF ANCHORAGES

This plan is for information only and is not to be used for navigation.